

10/2022:

BREAKING NEWS:

- iDter Automated Technology Ends Loitering, Intrusions and Property Losses - [read more](#)
- iDter announces a partnership with leading access control vendor KEYper - [read more](#)
- Check-out some of our [recent deterrences](#).

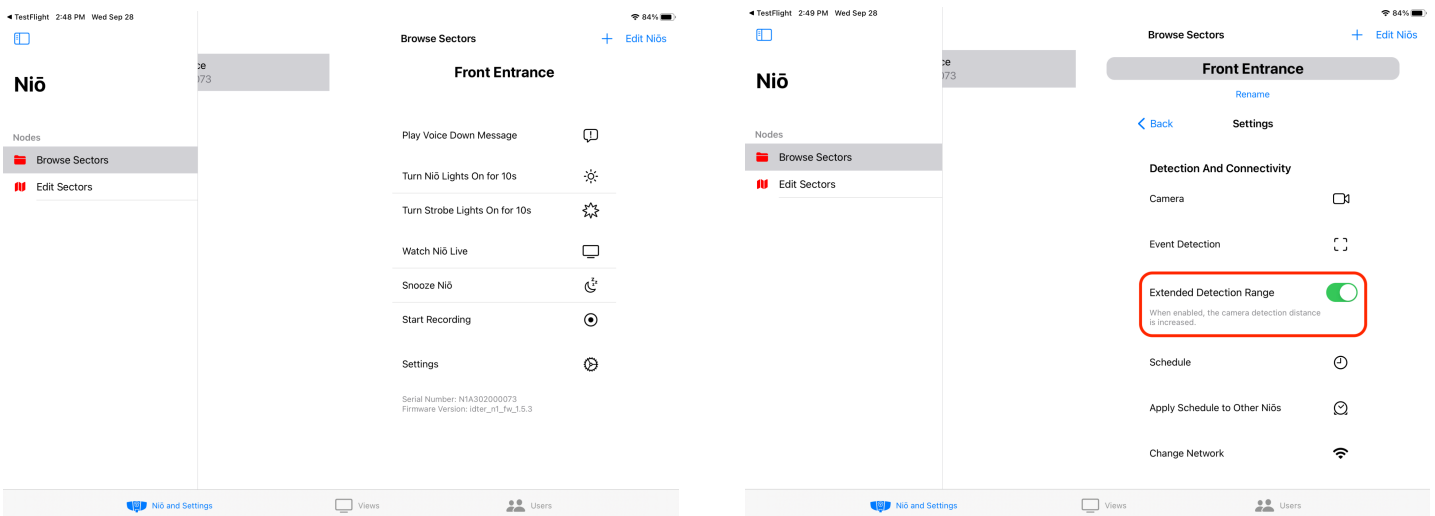
We have released updates to the iDter app and Niō firmware:

Version Information 2022_10:

- iOS App version 1.31.1 (available from the Apple App Store)
- Android version 1.31.2 (available from the Google Play Store)

New Features & Updates:

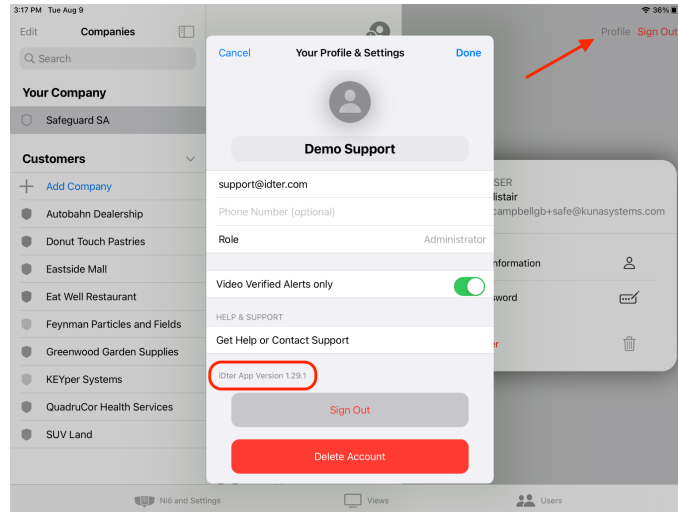
- Detection Range - we have added the ability to choose between standard and extended detection ranges. Enabling extended detection increases the overall detection range of your Niō. This setting can be enabled in the Camera Settings - toggle the Extended Detection Range ON.



You can read about more of our features on the iDter Support Center [here](#).

Here's how to check that you're using the latest version of the iDter app:

1. Access the 'Users' section of your app.
2. Tap 'Profile' in the upper right corner (next to 'Sign Out').
3. Your Profile screen will pop up, and you should see 'iDter App Version' listed at the bottom of the window, under 'Get Help or Contact Support'



You can also check your app version in device settings, or in the App Store(s) by searching for iDter.

We recommend setting up your mobile device for auto-updates so you never miss a iDter new feature!

For [iOS](#) devices:

1. Go to your device's 'Settings'
2. Select 'App Store'
3. Under 'Automatic Downloads', toggle ON 'App Updates'

For most [Android](#) devices:

1. Go to the Google Play Store
2. Select your profile icon in the Play Store and open Settings
3. In 'Network preferences' select 'Auto-update apps'
4. From the list of Auto-update options select either 'Over any network' or 'Over Wi-Fi only'

Steps may vary based on your device.

You can always contact our support team by emailing support@idter.com or giving us a call at 1(844)955-4411.