

11/2022:

BREAKING NEWS:

- iDter Automated Technology Ends Loitering, Intrusions and Property Losses - [read more](#)
- iDter announces a partnership with leading access control vendor KEYper - [read more](#)
- Check-out some of our [recent deterrents](#).

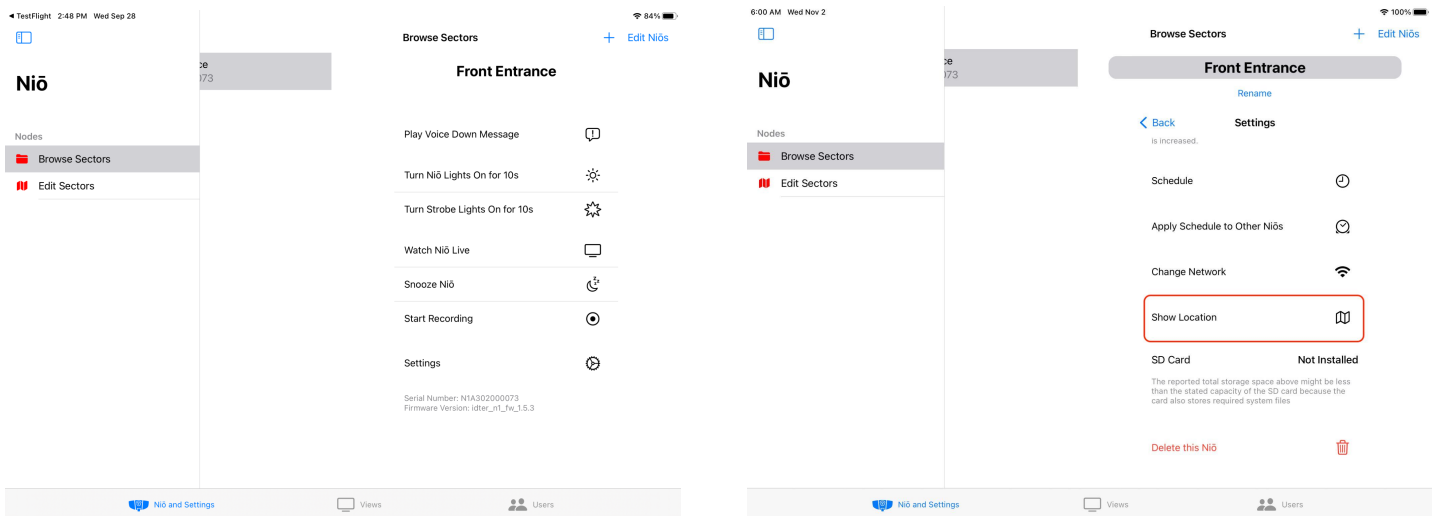
We have released updates to the iDter app and Niō firmware:

Version Information 2022_11:

- iOS App version 1.32.2 (available from the Apple App Store)
- Android version 1.32.0 (available from the Google Play Store)

New Features & Updates:

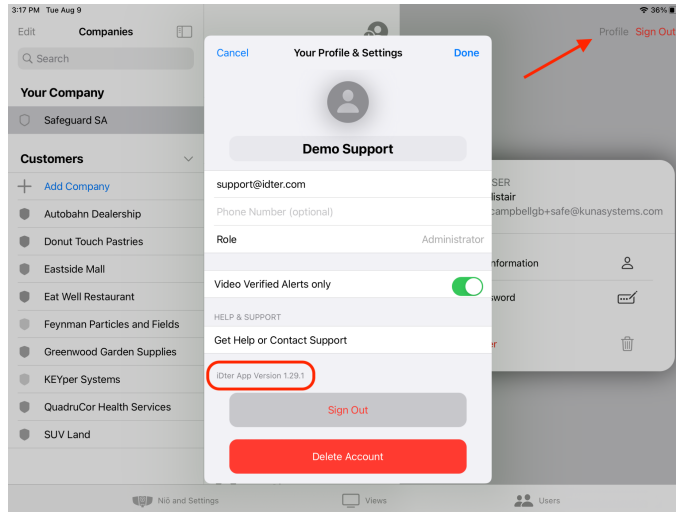
- Change Camera Location - when you establish or change the network connection of your Niō, the location of the Niō will be updated. The new location coordinates will be based on where you are when you connect the Niō to a network.
- Show Camera Location - we have added the ability to view the Niō Guardian’s current location. The location can be accessed in the camera Settings, and will be displayed on a map listing its GPS coordinates. If the camera is displaying the wrong location, simply reconnect the device using “Change Network” in the new location, or contact us at support@idter.com for assistance.



You can read about more of our features on the iDter Support Center [here](#).

Here's how to check that you're using the latest version of the iDter app:

1. Access the 'Users' section of your app.
2. Tap 'Profile' in the upper right corner (next to 'Sign Out').
3. Your Profile screen will pop up, and you should see 'iDter App Version' listed at the bottom of the window, under 'Get Help or Contact Support'



You can also check your app version in device settings, or in the App Store(s) by searching for iDter.

We recommend setting up your mobile device for auto-updates so you never miss a iDter new feature!

For [iOS](#) devices:

1. Go to your device's 'Settings'
2. Select 'App Store'
3. Under 'Automatic Downloads', toggle ON 'App Updates'

For most [Android](#) devices:

1. Go to the Google Play Store
2. Select your profile icon in the Play Store and open Settings
3. In 'Network preferences' select 'Auto-update apps'
4. From the list of Auto-update options select either 'Over any network' or 'Over Wi-Fi only'

Steps may vary based on your device.

You can always contact our support team by emailing support@idter.com or giving us a call at 1(844)955-4411.